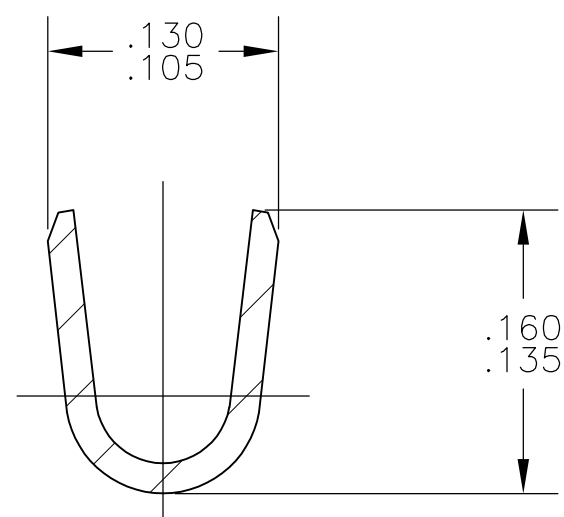
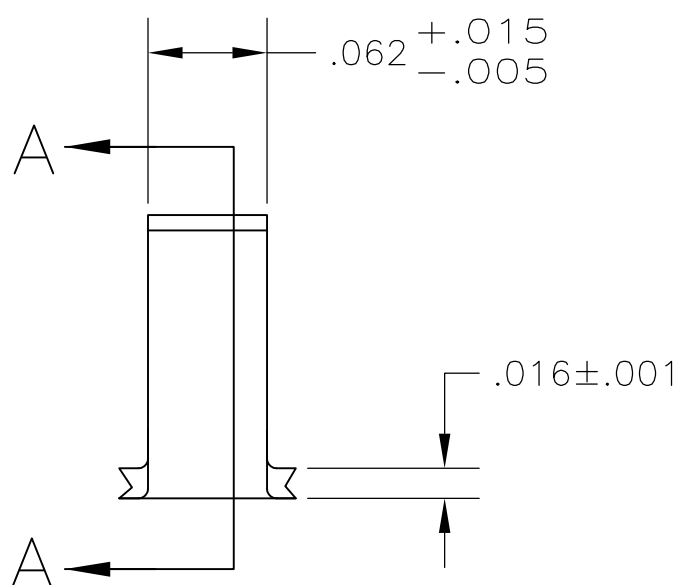
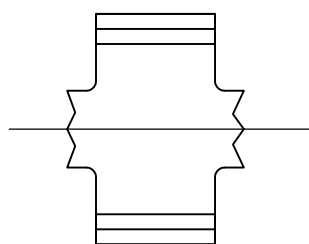


THIS DRAWING IS UNPUBLISHED. RELEASED FOR PUBLICATION  
 © COPYRIGHT BY TYCO ELECTRONICS CORPORATION. ALL RIGHTS RESERVED.

LOC	DIST	REVISIONS					
AF	50	P	LTR	DESCRIPTION	DATE	DWN	APVD
		P		REVISED PER ECR-08-030838	30MAR09	HMR	GP

- SUPPLIED 50,000 PIECES PER REEL.
- WIRE RANGE IS 1400-3600 CMA  
 CRIMP WIDTH: .090, F TYPE  
 CRIMP HEIGHT:  $\pm .002 = (\text{TOTAL CMA} + 7600) / 145,100$   
 FOR APPLICATOR INFORMATION CALL: 1-800-722-1111  
 FOR PRODUCT INFORMATION CALL: 1-800-522-6752

**3** FOREIGN PRODUCTION ONLY.



SECTION A-A

<b>3</b>	.000150 MIN NICKEL PLATE	TEMP 3 STEEL	40862-3
<b>3</b>	OBSOLETE	TEMP 3 STEEL	40862-2
<b>3</b>	OBSOLETE	TEMP 3 STEEL	40862-1
	TIN	081 BRASS	40862
	FINISH	MATERIAL	PART NUMBER

THIS DRAWING IS A CONTROLLED DOCUMENT.		DWN MICHAEL S. FEHER 29SEP2003	Tyco Electronics Corporation Harrisburg, PA 17105-3608	
DIMENSIONS: INCHES		CHK GARY D. PORTA 29SEP2003	NAME GARY D. PORTA	
TOLERANCES UNLESS OTHERWISE SPECIFIED:		APVD GARY D. PORTA 29SEP2003	PRODUCT SPEC	
0 PLC ± -		APPLICATION SPEC		
1 PLC ± -		114-2088		
2 PLC ± .010		WEIGHT -		
3 PLC ± -		SIZE A3 CAGE CODE 00779 DRAWING NO C-40862		
4 PLC ± -		RESTRICTED TO -		
ANGLES ± 1°		SCALE 10:1 SHEET 1 OF 1 REV P		
MATERIAL SEE TABLE	FINISH SEE TABLE	CUSTOMER DRAWING		