

TECHNICAL CHARACTERISTICS

SPECIFICATION

- >**Contact Rating:**
 - Switching: 25mA, 24VDC
 - Non-Switching: 100mA, 50VDC
- >**Contact Resistance:**
 - Initial: 50mOHM max.
 - After Life Test: 100mOHM max.
- >**Insulation Resistance:** min. 100MOHM at 500VDC
- >**Dielectric Strength:** 300VAC for 1 minute
- >**Operating Force:** 500g max.
- >**Mechanical Life:** min. 2000 cycles
- >**Electrical Life:** 1000 cycles / 25mA, 24VDC
- >**Flat Actuator with top tape sealed**

MATERIAL

- >**Cover:** PPS UL 94V-0, color Black
- >**Base:** PPS UL 94V-0, color Black
- >**Actuator:** PA 46 UL 94V-0, color White
- >**Tape:** Polyimide Tape
- >**Contact:** Gold Plated
- >**Terminal:** Gold Plated

SOLDERING INFORMATION

- >**Terminal in SMD version**
- >**Reflow Soldering according to JEDEC J-STD-020D**
- >**Keep in "off" position during soldering**
- >**For cleaning or washing only with top tape sealed**
- >**VPH Heating Process only with top taped sealed**

ENVIRONMENTAL:

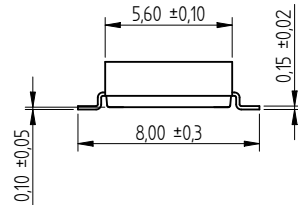
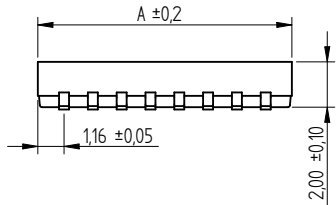
- >**Storage condition:** -40°C ~ +85°C
- >**Operating condition:** -40°C ~ +85°C
- >**Compliance:** Lead Free, ROHS, Reach

PACKAGING INFORMATION

- >**Tape & Reel packaging**
- >**On delivery in "off" position**



Wiring Diagram



DIMENSION

No. Of Pole	1	2	3	4	5	6	8	10	12
Dim. A (mm)	2,31	3,58	4,85	6,12	7,39	8,66	11,20	13,74	16,28

	Projection 	GENERAL TOLERANCE .x = +/- 0,2 .xx = +/- 0,15		Basic material	
		Date 09-02-25	Name Jelisarow	DESCRIPTION WE-SWITCH_HP-type, SMD version flat actuator with top tape sealed	
Checked		Scale 3:1	Position	Drawing.- No. 4161311608xx	SIZE A4
REV	FILE	DATE	BY	EDV NO 4161311608xx.dft	System: Solid Edge V20