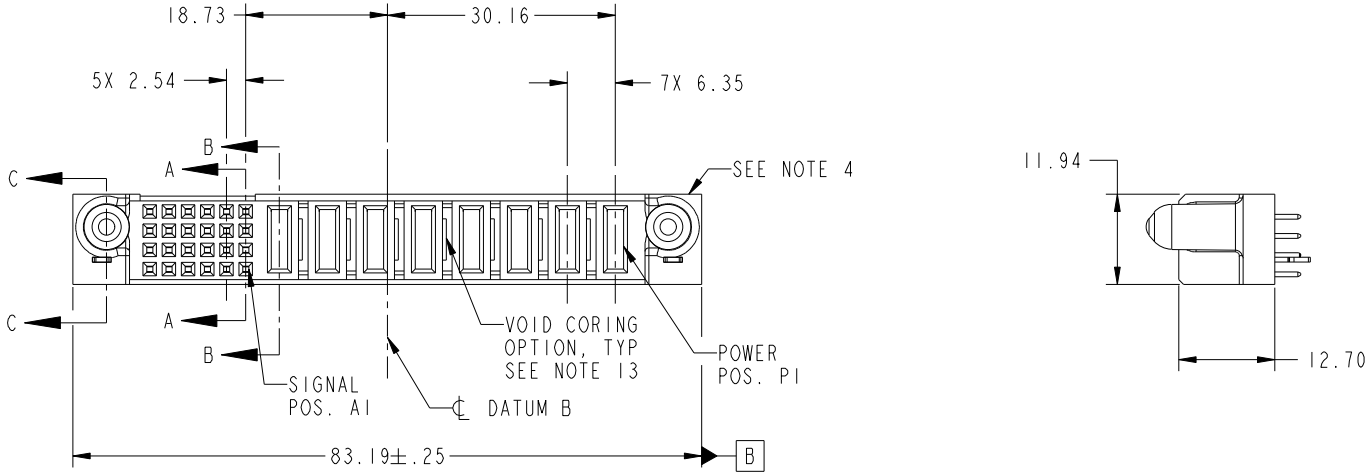


Tous droits strictement réservés. Reproduction ou communication a des tiers interdite sous quelque forme que ce soit sans autorisation écrite du propriétaire. Propriété de c.FCI. Droits de reproduction FCI.

All rights strictly reserved. Reproduction or issue to third parties in any form whatever is not permitted without written authority from the proprietor. Property of FCI. Copyright FCI.



PRODUCT NO.	ROWS	SIGNAL					POWER								E1	
		E2	6	5	4	3	2	1	P8	P7	P6	P5	P4	P3		P2
51940-165-- NOTE: 3	D C B A															



CODE	DIM "M" MATING LENGTH	CONTACT TYPE
E	[N/A]	SIGNAL
PA	[1.07]	POWER
HA	[N/A]	HOLD-DOWN

mat'l code				SEE NOTE		tolerances unless otherwise specified		CUSTOMER		 www.fciconnect.com	
lir	ecn no.	dr	date	linear	0.X ± 0.5	COPY		projection		title	
A	DG05-0324	CS	09/12/05		0.XX ± 0.25	MM				8P + 24S VERTICAL SOLDER RECEPT	
B	DG07-0498	JW	09/15/08	angles	0.XXX ± 0.10	scale		product family		code	
					0° ± 2°	1:1		PwrBlade		213	
				dr	CS	09/12/05		size		sheet	
				engr	SALLY LUO	09/12/05		A		1 of 4	
				chr	VICTOR LIN	09/12/05		51940-165			
				appd	JOESPH HSIA	09/12/05					
sheet index	revision sheet	B	B	B	B						
		1	2	3	4						

A

A

B

B

1 | 2

Pro/E

PDM: Rev: B

STAT: Released

Printed: Dec 20, 2010

3

4

cage code 28556

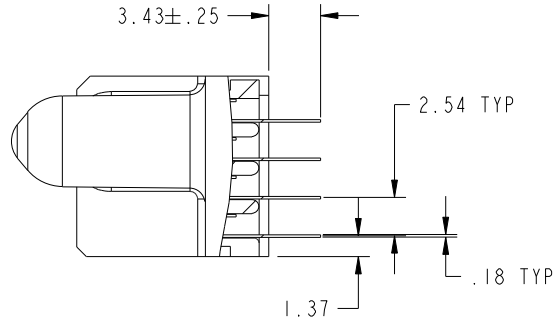
4

Tous droits strictement reserves. Reproduction ou communication a des tiers interdite sous quelque forme que ce soit sans autorisation ecrite du proprietaire. Propriete de c.FCI. Droits de reproduction FCI.

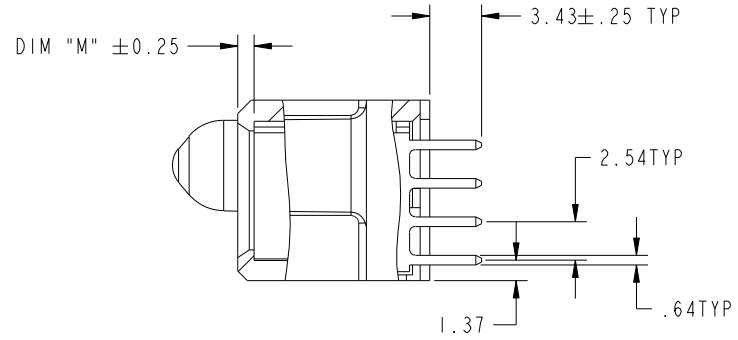
All rights strictly reserved. Reproduction or issue to third parties in any form whatever is not permitted without written authority from the proprietor. Property of FCI. Copyright FCI.



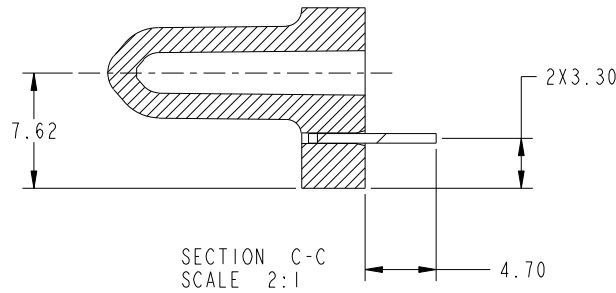
PRODUCT NUMBER
51940-165--
NOTE: 3



SECTION A-A
SCALE 2:1



SECTION B-B
SCALE 2:1



SECTION C-C
SCALE 2:1

mat'l code		SEE NOTE		tolerances unless otherwise specified		CUSTOMER		www.fciconnect.com	
lfr	ecn no.	dr	date	linear	0.X ± 0.5	COPY		title	
B				linear	0.XX ± 0.25	projection		8P + 24S	
				angles	0.XXX ± 0.10			VERTICAL SOLDER RECEPT	
					0° ± 2°			product family	
				dr	CS 09/12/05	MM		PwrBlade	
				enr	SALLY LUO 09/12/05	1:1		code	
				chr	VICTOR LIN 09/12/05			213	
				appd	JOESPH HSIA 09/12/05			sheet	
sheet index		revision sheet						A 51940-165	
								2	

cage code 22556

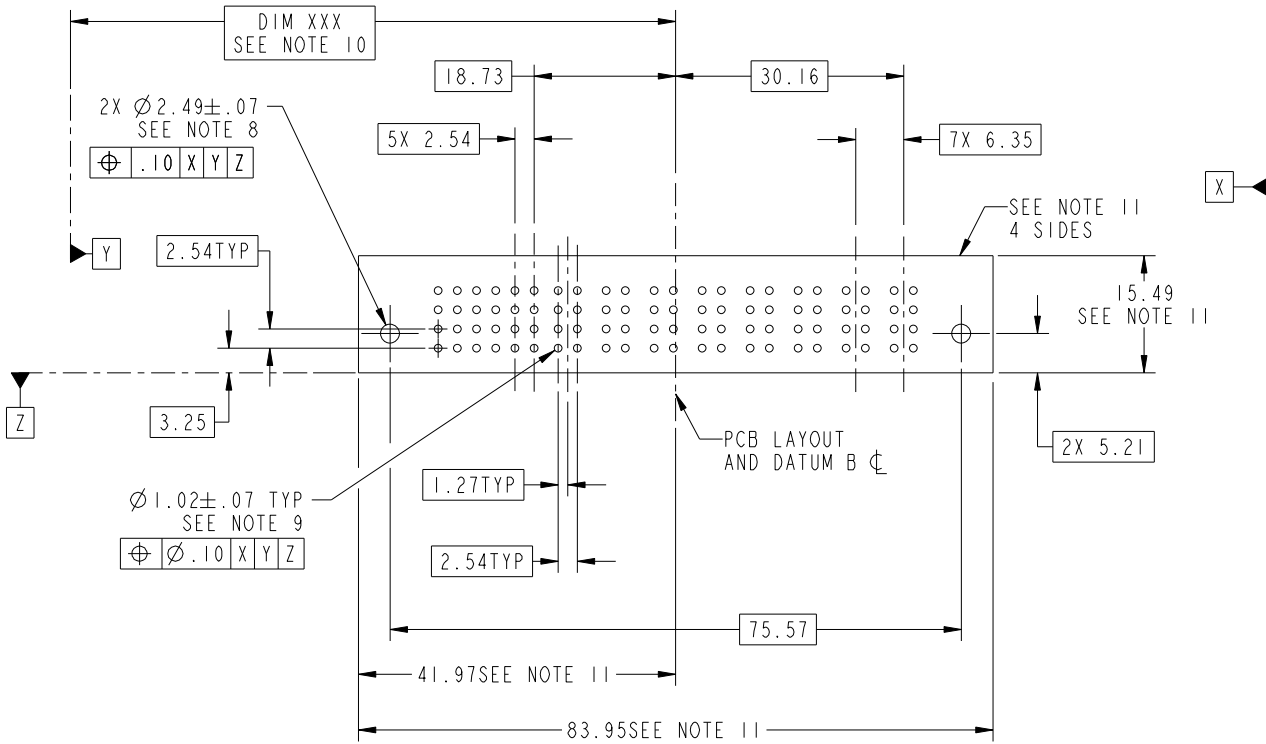
Tous droits strictement reserves. Reproduction ou communication a des tiers interdite sous quelque forme que ce soit sans autorisation ecrite du proprietaire. Propriete de c.FCI. Droits de reproduction FCI.

All rights strictly reserved. Reproduction or issue to third parties in any form whatever is not permitted without written authority from the proprietor. Property of FCI. Copyright FCI.



PRODUCT NUMBER

51940-165--
NOTE: 3



mat'l code		SEE NOTE		tolerances unless otherwise specified		CUSTOMER		 www.fciconnect.com	
lir	ecn no.	dr	date	linear	0.X ±0.5	COPY		title	
B				linear	0.XX ±0.25	projection		8P + 24S	
				angles	0.XXX ±0.10			VERTICAL SOLDER RECEPT	
				dr	0° ±2°			product family	
				enr	CS 09/12/05	MM		PwrBlade	
				chr	SALLY LUO 09/12/05			code	
				appd	VICTOR LIN 09/12/05	1:1		213	
					JOESPH HSIA 09/12/05			sheet	
sheet index	revision sheet							3	
								A 51940-165	

cage code 22506

Pro/E

PDM: Rev:B

STATUS: **Released**

Printed: Dec 20, 2010

Tous droits strictement reserves. Reproduction ou communication a des tiers interdite sous quelque forme que ce soit sans autorisation ecrite du proprietaire. Propriete de c.FCI. Droits de reproduction FCI.



All rights strictly reserved. Reproduction or issue to third parties in any form whatever is not permitted without written authority from the proprietor. Property of FCI. Copyright FCI.

1 | 2

3

4

PRODUCT NUMBER

51940-165--
NOTE: 3

NOTES:

1. DIMENSIONS AND TOLERANCES ARE IN ACCORDANCE WITH ASME Y14.5M, 1994 UNLESS OTHERWISE SPECIFIED.

CONNECTOR NOTES:

② HOUSING MATERIAL: UL 94 V-0 GLASS FILLED
HIGH-TEMP THERMOPLASTIC
POWER CONTACT MATERIAL: COPPER ALLOY
SIGNAL PIN MATERIAL: COPPER ALLOY

△ 3. PLATING:
SEE ITEM 586 IN PRINT 10064183 FOR PLATING SPEC OF 51940-165; 51940-165LF PRESPECTIVELY.

④ MANUFACTURER'S NAME, P/N, AND DATE CODE TO APPEAR ON THIS SURFACE.

5. PRODUCT SPECIFICATION GS-12-149.
APPLICATION SPECIFICATION BUS-20-067.

6. PACKAGED IN TRAYS.

PCB NOTES:

7. ALL HOLE DIAMETERS ARE FINISHED HOLE SIZE.

⑧ MOUNTING HOLES, WHERE APPLICABLE, ARE UNPLATED.

⑨ $\varnothing 1.151 \pm 0.025$ DRILLED HOLES PLATED WITH
0.008 MIN SnPb OR Sn OVER 0.03
TO 0.08 Cu PLATING TO ACHIEVE
 $\varnothing 1.02 \pm 0.07$ HOLE.

⑩ "DIM XXX" TO BE DETERMINED BY THE CUSTOMER.

⑪ CONNECTOR KEEP-OUT ZONE.

12 △/B SYMBOL WILL BE NEXT TO ANY DIMENSION, VIEW, OR NOTE WHICH HAS BEEN MODIFIED WITH THE CURRENT DRAWING REVISION.

13. THE VOID CORING IN BETWEEN POWER MODULES, SIGNAL MODULES AND END MODULES ARE OPTIONAL AND THE SHAPE MAY BE DIFFERENT FOR OPTIMIZING THE MOLDING PROCESS. THE VOID CORING WILL NOT EFFECT TO PRODUCT FUNCTION.

mat'l code				SEE NOTE		tolerances unless otherwise specified		CUSTOMER		FCI www.fciconnect.com	
lir	ecn no.	dr	date	linear	0.X ± 0.5		COPY		title 8P + 24S VERTICAL SOLDER RECEPT		
B					0.XX ± 0.25		projection				
					0.XXX ± 0.10						
				angles	0° ± 2°				product family PwrBlade code		
				dr	CS	09/12/05	MM		size	dwg no	213
				enrg	SALLY LUO	09/12/05			A	51940-165	sheet
				chr	VICTOR LIN	09/12/05	scale		4		
				appd	JOESPH HSIA	09/12/05	1:1				
sheet index	revision sheet										

A

A

B

B

1 | 2

Pro/E

PDM: Rev:B

STATUS: Released

Printed: Dec 20, 2010

cage code 2856