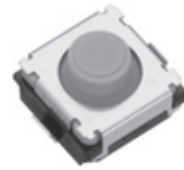


6 mm Square Middle Travel 2 terminals SMD Light Touch Switches

Type: **EVPBD**



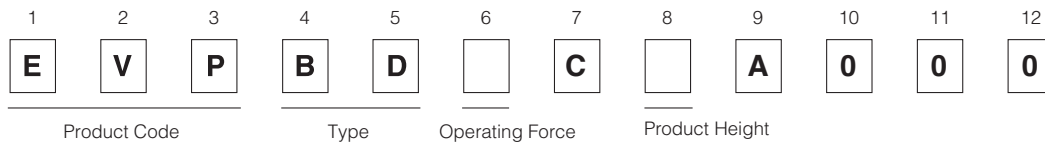
■ Features

- External dimensions : 6.0mm×6.0 mm, Height 4.0 mm
- Sharp feeling and silent by metal dome and rubber dome

■ Recommended Applications

- Operating switches for car electronic equipment, car audio systems, etc.
- Steering switches

■ Explanation of Part Numbers



■ Specifications

Type	Snap action/Push-on type SPST	
Electrical	Rating	10 μ A 2 V DC to 20 mA 15 V DC (Resistive load)
	Contact Resistance	500 m Ω max.
	Insulation Resistance	100 M Ω min. (at 100 V DC)
	Dielectric Withstanding Voltage	250 V AC for 1 minute
	Bouncing	10 ms max. (ON, OFF)
Mechanical	Operating Force	3.5 N
	Travel	0.75 mm
Endurance	Operating Life	100,000 cycles min.
Operating Temperature		-40 °C to +90 °C
Storage Temperature		-40 °C to +90 °C (Bulk) -20 °C to +60 °C (Taping)
Minimum Quantity/Packing Unit		2,000 pcs. Embossed Taping (Reel Pack)
Quantity/Carton		10,000 pcs.

Note: Non washable

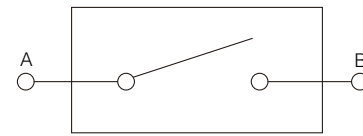
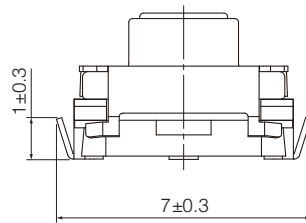
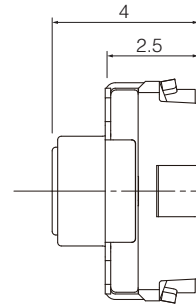
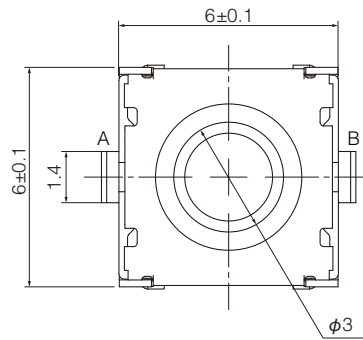
Design and specifications are each subject to change without notice. Ask factory for the current technical specifications before purchase and/or use.
Should a safety concern arise regarding this product, please be sure to contact us immediately.

■ Dimensions in mm (not to scale)

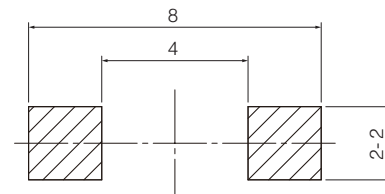
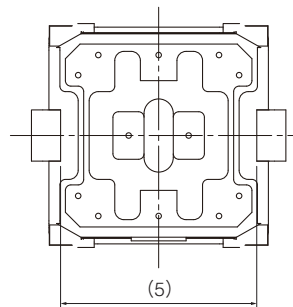
EVPBD

(Embossed Taping)

General dimension tolerance : ± 0.2
 () dimensions are reference dimensions.



Circuit diagram



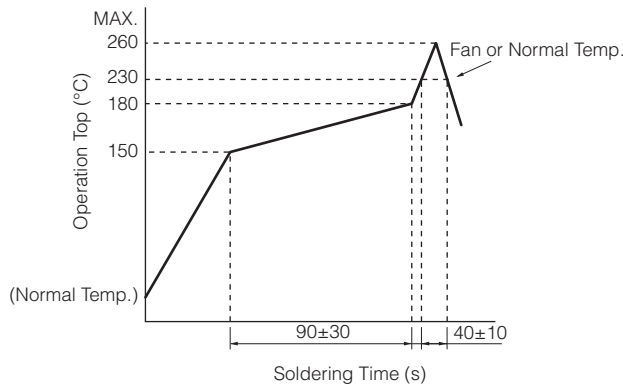
Land pattern plan

Soldering thickness $t=0.15\pm0.03$

Part Numbers	Operating Force	Height	Operating Life
EVPBD6C1A000	3.5 N	4.0 mm	100,000 cycles

Design and specifications are each subject to change without notice. Ask factory for the current technical specifications before purchase and/or use.
 Should a safety concern arise regarding this product, please be sure to contact us immediately.

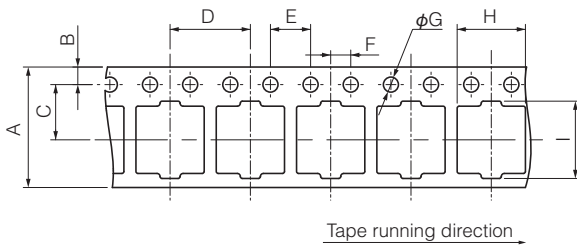
■ Recommended Reflow Soldering Conditions



* Reflow temperature may vary by location even in the same reflow condition. Please check the reflow temperature at terminals and at the top of a switch to make sure the both temperatures are within the specification. If even one of them is out of the specifications, please adjust.

● Embossed Carrier Taping

Tape width=12.0 mm (A=12.0 mm)



Taping condition : Lack of products in the middle of taping should be one MAX, but total quantity specified in the specifications should be secured.
 Peeling off strength of top tape : It should be within 0.2N to 1.0N at 165 degree in peeling off angle.
 Joint of carrier tape : One joint per one reel may exist.

Part No.	Height	A	B	C	D	E	F	G	H	I	J	t
EVPBD	4.0	12.0±0.3	1.75±0.10	5.5±0.1	8.0±0.1	4.0±0.1	2.0±0.1	1.5 ^{+0.1}	6.3±0.2	7.5±0.2	4.25±0.20	0.4±0.1

Design and specifications are each subject to change without notice. Ask factory for the current technical specifications before purchase and/or use. Should a safety concern arise regarding this product, please be sure to contact us immediately.