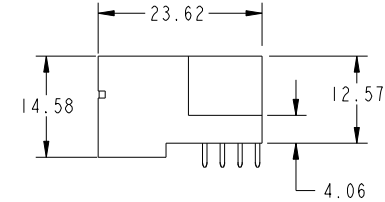
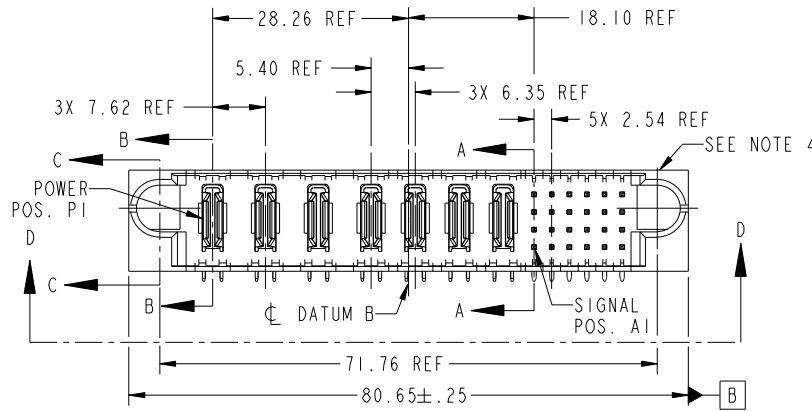
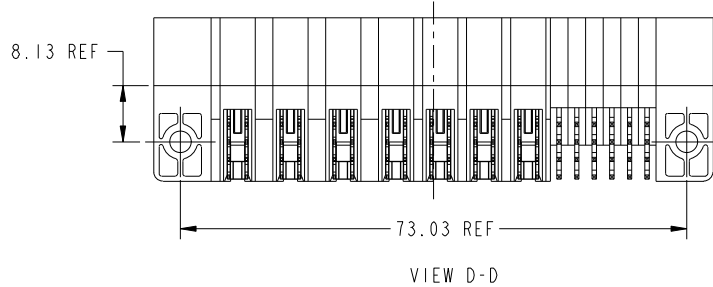


Tous droits strictement reserves. Reproduction ou communication a des tiers interdite sous quelque forme que ce soit sans autorisation écrite du propriétaire. Propriete de c FCI. Droits de reproduction FCI.



All rights strictly reserved. Reproduction or issue to third parties in any form whatever is not permitted without written authority from the proprietor. Property of FCI. Copyright FCI.

PRODUCT NO. 51939-286 NOTE ③	ROWS D C B A	POWER							SIGNAL						E2																	
		E1	P1	P2	P3	P4	P5	P6	P7	1	2	3	4	5		6																
			PA	PA	PA	PA	PA	PA	PA	U	H	U	U	H	T	T	G	G	T	G	S	F	F	F	S	F	R	R	R	E	E	E



CODE	DIM "M" MATING LENGTH	CONTACT TYPE
U	[6.86]	SIGNAL
T	[6.86]	SIGNAL
S	[6.86]	SIGNAL
R	[6.86]	SIGNAL
E	[5.59]	SIGNAL
F	[5.59]	SIGNAL
G	[5.59]	SIGNAL
H	[5.59]	SIGNAL
PA	[N/A]	POWER

mat'l code				SEE NOTE 2		tolerances unless otherwise specified		CUSTOMER		FCI	
ltr	ecn no.	dr	date	linear	0.X ± 0.3	projection		COPY		www.fciconnect.com	
A	DG07-0176	JMG	04/10/07	angles	0.XX ± 0.13	MIM		title		3ACP + 4P + 24S	
				enr	0.XXX ± 0.051	scale		product family		PwrBlade	
				chr	0° + 2°	1:1		size		code	
				appd	JM GUO 04/10/07			dwg no		213	
					RYAN YUAN 04/10/07			51939-286		sheet	
					GARY HSIEH 04/10/07			A		1 of 4	
					JOSEPH HSIA 04/10/07						
sheet index	revision sheet	A 1	A 2	A 3	A 4						

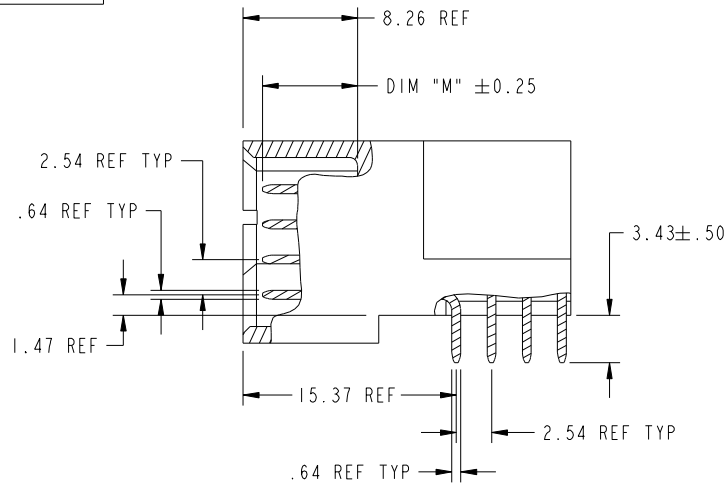
cage code 22526

Tous droits strictement reserves. Reproduction ou communication a des tiers interdite sous quelque forme que ce soit sans autorisation écrite du propriétaire. Propriete de c FCI. Droits de reproduction FCI.

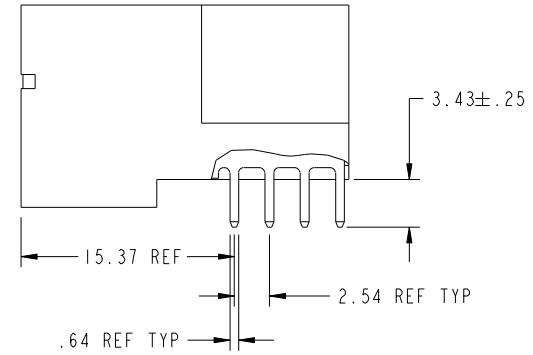
All rights strictly reserved. Reproduction or issue to third parties in any form whatever is not permitted without written authority from the proprietor. Property of FCI. Copyright FCI.



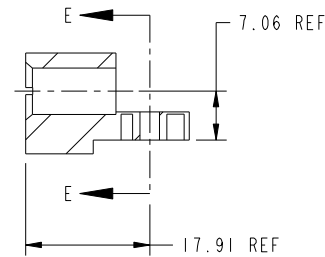
PRODUCT NUMBER  
51939-286--  
NOTE (3)



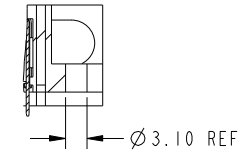
BROKEN-OUT SECTION A-A  
SCALE 2:1



BROKEN-OUT SECTION B-B  
SCALE 2:1



SECTION C-C



PARTIAL SECTION E-E

mat'l code				SEE NOTE 2		tolerances unless otherwise specified		CUSTOMER		FCI	
ltr	ecn no.	dr	date	linear	0.X ±0.3	projection		COPY		www.fciconnect.com	
A					0.XX ±0.13	MIM		title		3ACP + 4P + 24S	
				angles	0.XXX ±0.051	1:1		RIGHT ANGLE SOLDER HEADER		product family PwrBlade code 213	
				dr	JM GUO 04/10/07	scale		size		dwg no 51939-286 sheet 2 of 4	
				enr	RYAN YUAN 04/10/07	A		A		2 of 4	
				chr	GARY HSIEH 04/10/07						
				appd	JOSEPH HSIA 04/10/07						
sheet index		revision sheet									

cage code 22526

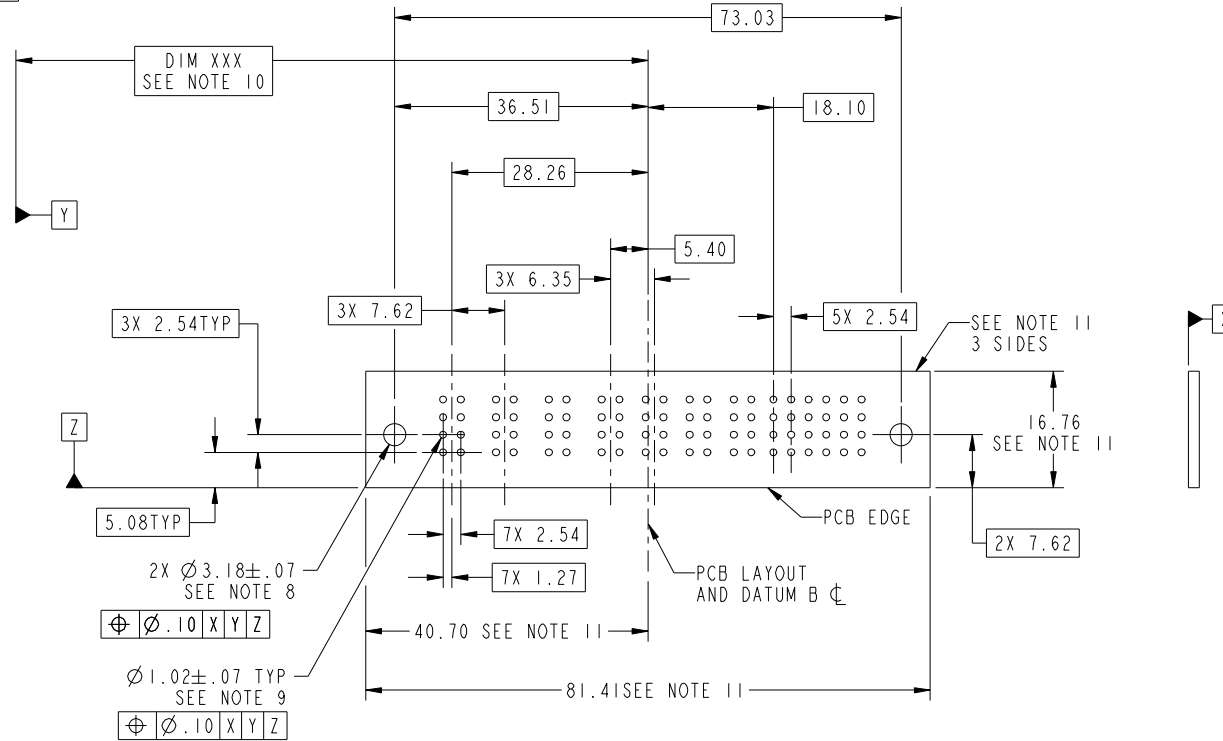
Pro/E

Tous droits strictement reserves. Reproduction ou communication a des tiers interdite sous quelque forme que ce soit sans autorisation écrite du propriétaire. Propriete de c FCI. Droits de reproduction FCI.



All rights strictly reserved. Reproduction or issue to third parties in any form whatever is not permitted without written authority from the proprietor. Property of FCI. Copyright FCI.

PRODUCT NUMBER  
51939-286--  
NOTE ③



RECOMMENDED PCB LAYOUT

mat'l code				SEE NOTE 2		tolerances unless otherwise specified		CUSTOMER		FCI	
ltr	ecn no.	dr	date	linear	0.X ± 0.3	COPY		www.fciconnect.com		title	
A					0.XX ± 0.13	projection		3ACP + 4P + 24S		RIGHT ANGLE SOLDER HEADER	
				angles	0.XXX ± 0.051	MIM		product family		PwrBlade	
				dr	0° ± 2°	scale		size		code	
				engr	JM GUO 04/10/07	1:1		dwg no		213	
				chr	RYAN YUAN 04/10/07			51939-286		sheet	
				appd	GARY HSIEH 04/10/07			A		3 of 4	
					JOSEPH HSIA 04/10/07						
sheet index	revision sheet										

cage code 22526

Pro/E

Tous droits strictement reserves. Reproduction ou communication a des tiers interdite sous quelque forme que ce soit sans autorisation écrite du propriétaire. Propriete de c FCI. Droits de reproduction FCI.



All rights strictly reserved. Reproduction or issue to third parties in any form whatever is not permitted without written authority from the proprietor. Property of FCI. Copyright FCI.

PRODUCT NUMBER  
51939-286--  
NOTE (3)

NOTES:

1. DIMENSIONS AND TOLERANCES ARE IN ACCORDANCE WITH ASME Y14.5M, 1994 UNLESS OTHERWISE SPECIFIED.

CONNECTOR NOTES:

- (2) HOUSING MATERIAL: UL 94 V-0 GLASS FILLED HIGH-TEMP THERMOPLASTIC  
POWER CONTACT MATERIAL: COPPER ALLOY  
SIGNAL PIN MATERIAL: COPPER ALLOY
- (3) PLATING:  
SEE PRINT 10064183 FOR PLATING SPEC OF 51939-286; 51939-286LF
- (4) MANUFACTURER'S NAME, P/N, AND DATE CODE TO APPEAR ON THIS SURFACE.
- 5. PRODUCT SPECIFICATION GS-12-149.  
APPLICATION SPECIFICATION BUS-20-067.
- 6. PACKAGED IN TRAYS.

PCB NOTES:

- 7. ALL HOLE DIAMETERS ARE FINISHED HOLE SIZE.
- (8) MOUNTING HOLES, WHERE APPLICABLE, ARE UNPLATED.
- (9)  $\varnothing 1.151 \pm 0.025$  DRILLED HOLES PLATED WITH  
0.008 MIN SnPb OVER 0.03  
TO 0.08 Cu PLATING TO ACHIEVE  
 $\varnothing 1.02 \pm 0.07$  HOLE.
- (10) "DIM XXX" TO BE DETERMINED BY THE CUSTOMER.
- (11) CONNECTOR KEEP-OUT ZONE.

mat'l code				SEE NOTE 2	tolerances unless otherwise specified		CUSTOMER			www.fciconnect.com		
ltr	ecr no.	dr	date	linear	0.X ± 0.3		COPY		title	3ACP + 4P + 24S RIGHT ANGLE SOLDER HEADER		
A					0.XX ± 0.13		projection				product family	PwrBlade
					0.XXX ± 0.051							
				angles	0° ± 2°		MIM		size	dwg no		
				dr	JM GUO	04/10/07	← MIM →				A	51939-286
				enrg	RYAN YUAN	04/10/07	scale		sheet	4 of 4		
				chr	GARY HSIEH	04/10/07	1:1					
				appd	JOSEPH HSIA	04/10/07						
sheet index	revision sheet											

cage code 22526

Pro/E