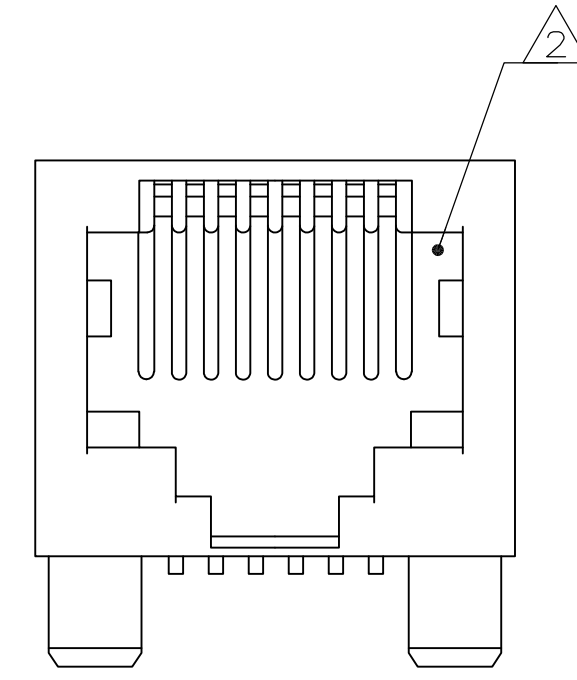
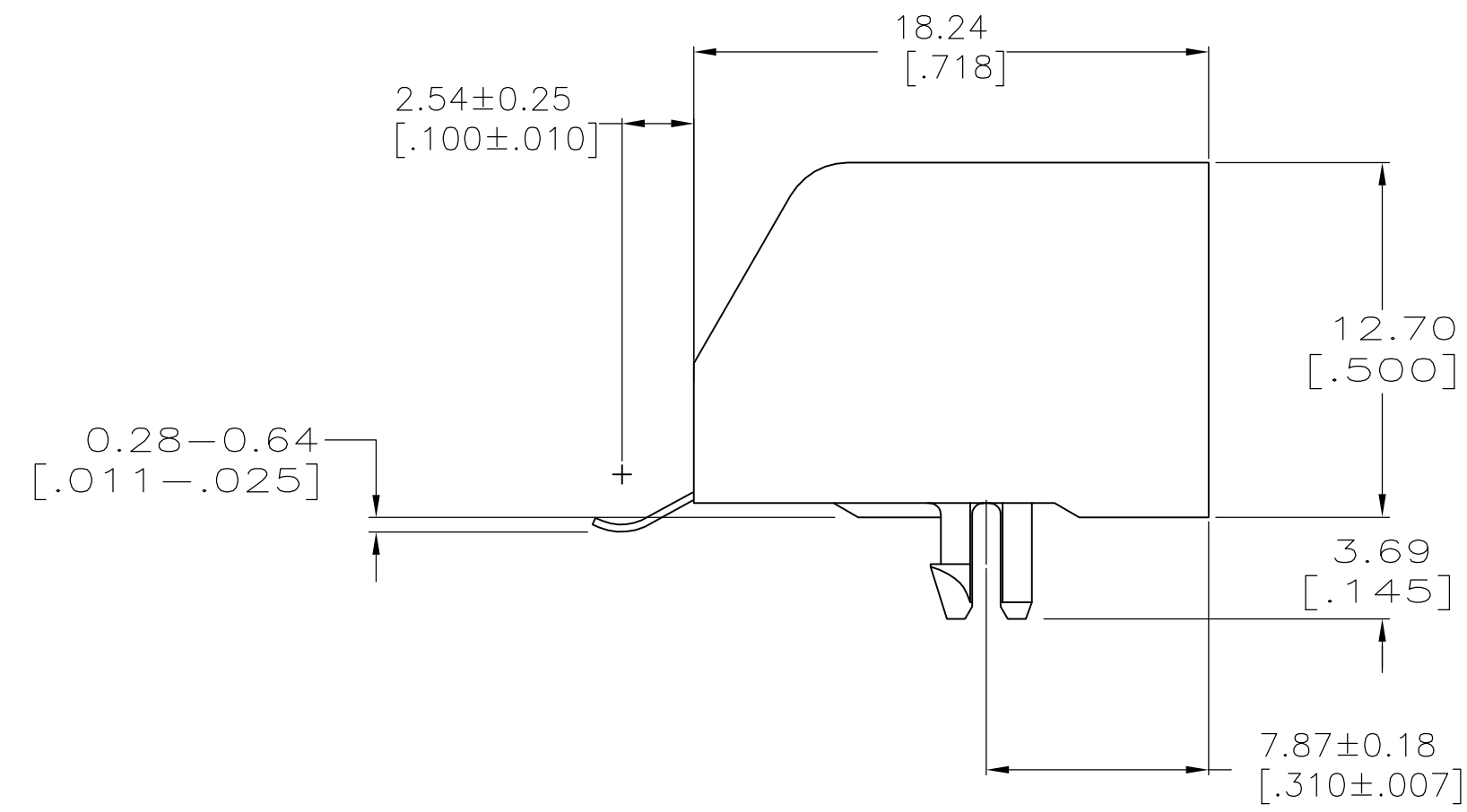


LOC	DIST	REVISIONS			
P	LTR	DESCRIPTION	DATE	OWN	APPD
AA	00				
C1		REVISED PER ECO-11-005033	23MAR11	RK	HMR



- MATERIAL: HOUSING - HTN MOLDING COMPOUND, 94 VO, COLOR: BLACK.
TERMINAL - 0.36 [.014] THICK PHOS-BRONZE PLATE WITH 1.27µm [.000050] MINIMUM THICK HARD GOLD IN LOCALIZED GOLD PLATE AREA AND 3.81µm [.000150] MINIMUM THICK MATTE TIN IN SOLDER AREA OVER 1.27µm [.000050] MINIMUM THICK NICKEL UNDERPLATE.

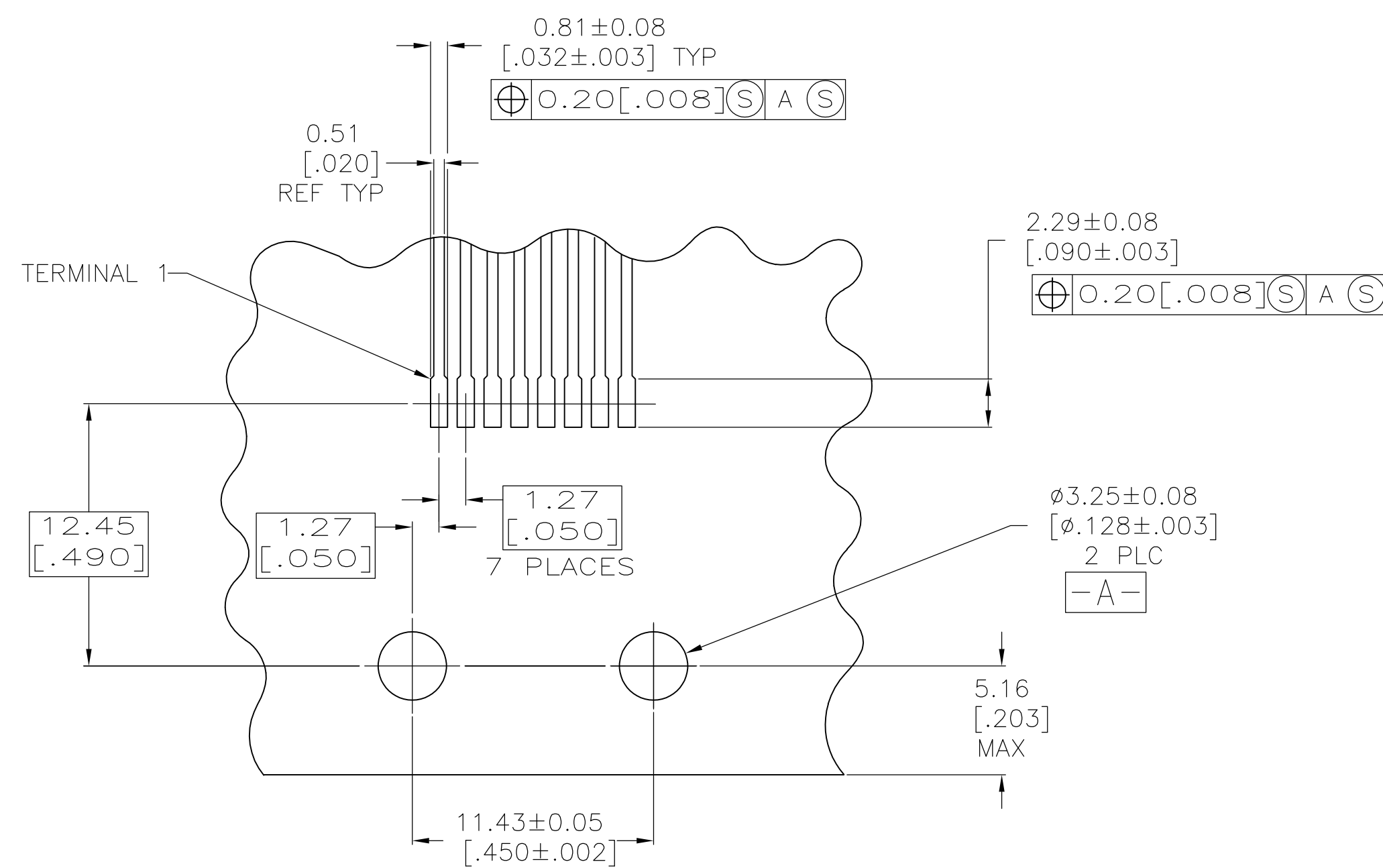
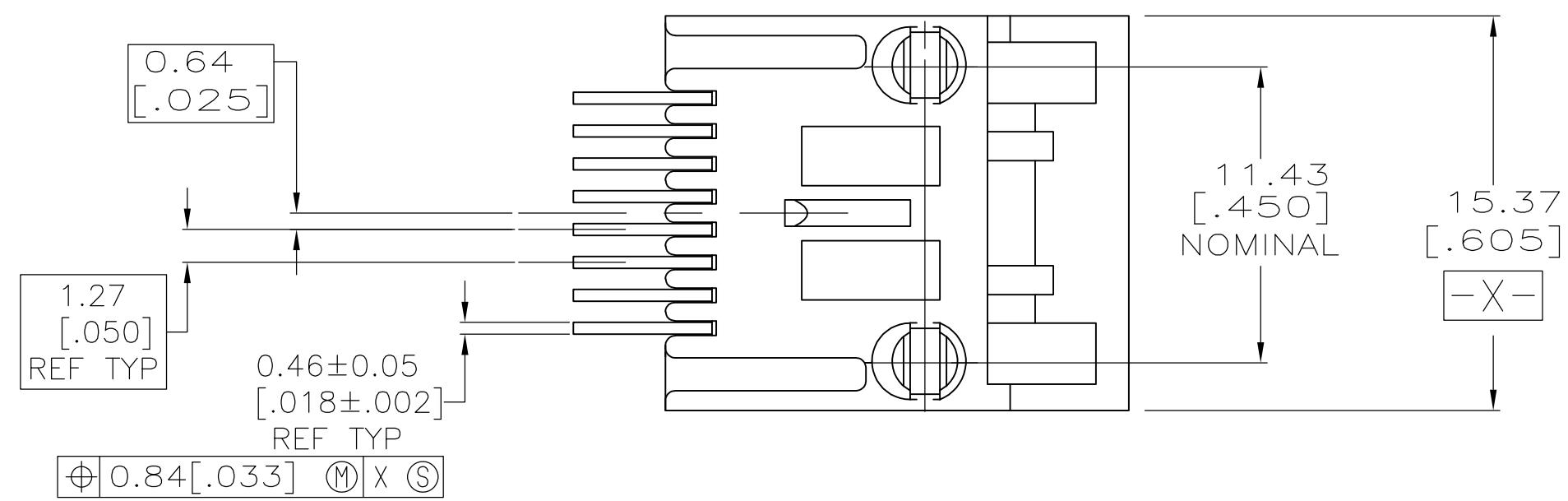
△ CAVITY CONFORMS TO FCC RULES AND REGULATIONS, PART 68, SUBPART F.

- ALL DIMENSIONS SHOWN ARE MAXIMUM UNLESS OTHERWISE SPECIFIED AND ARE PRIOR TO SURFACE MOUNT PROCESSING.

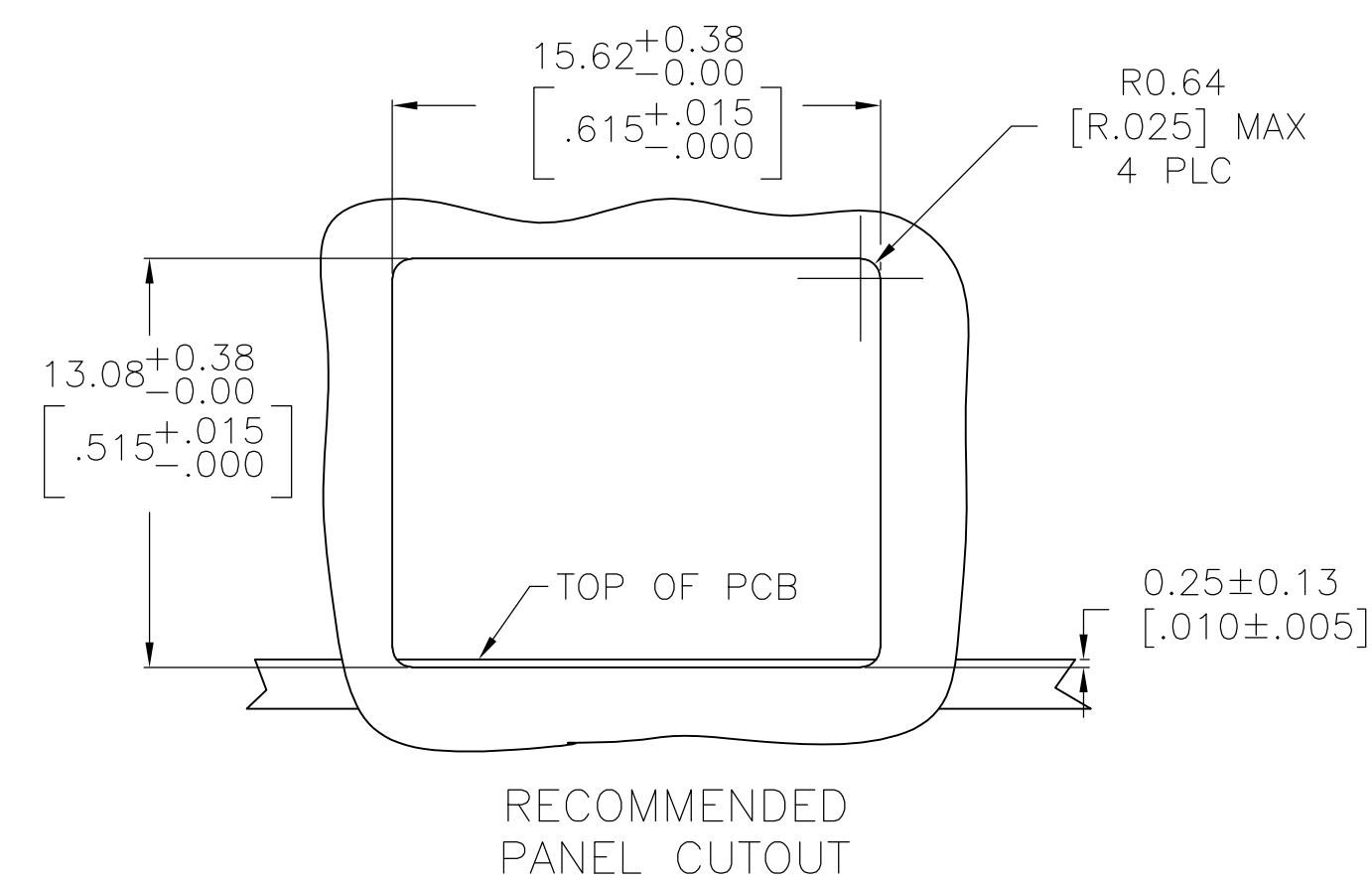
- SNAP-IN RETENTION FEATURE ACCOMMODATES 1.45-1.70 [.062±.005] THICK PRINTED CIRCUIT BOARD.

△ ASSEMBLIES ARE PACKAGED 36 IN A TUBE.

△ ASSEMBLIES ARE PACKAGED IN TRAYS.



RECOMMENDED PRINTED CIRCUIT BOARD LAYOUT
COMPONENT SIDE



RECOMMENDED
PANEL CUTOUT

△ 5	5555764-3
△ 6	5555764-1
PACKAGED	PART NO

THIS DRAWING IS A CONTROLLED DOCUMENT.		OWN G. ATTADIA - DOCKS	09JUN2005	NAME MODULAR JACK ASSEMBLY, 8 POSITION, LOW PROFILE, RIGHT ANGLE, SURFACE MOUNT
DIMENSIONS: mm(INCHES)		CHK WESTMAN	09JUN2005	
TOLERANCES UNLESS OTHERWISE SPECIFIED:		APVD S. FLICKINGER	09JUN2005	PRODUCT SPEC 108-1163
0 PLC ± -		APPLICATION SPEC 114-6040		SIZE A1
1 PLC ± -		MATERIAL SEE NOTE 1		CAGE CODE 00779
2 PLC ± -		FINISH SEE NOTE 1		DRAWING NO 5555764
3 PLC ± -		WEIGHT -		RESTRICTED TO -
4 PLC ± -		CUSTOMER DRAWING		SCALE 4:1
ANGLES ± -		SCALE 4:1		SHEET 1 OF 1
MATERIAL SEE NOTE 1		SCALE 4:1		REV C1