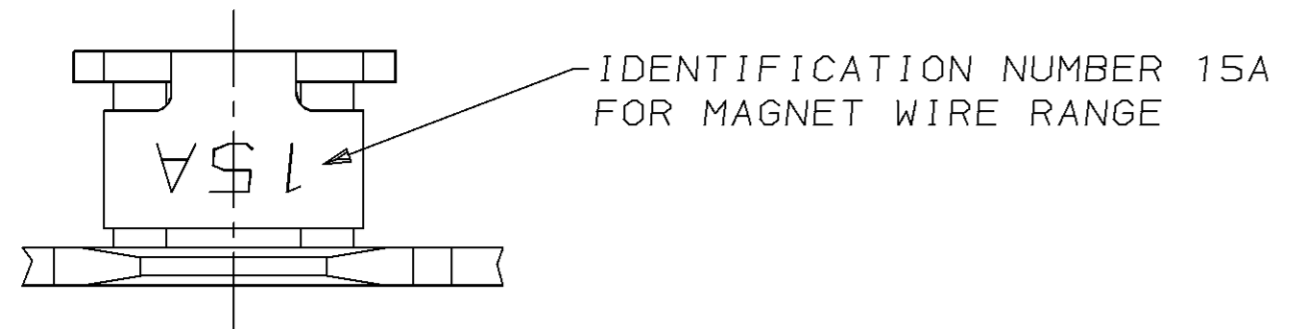
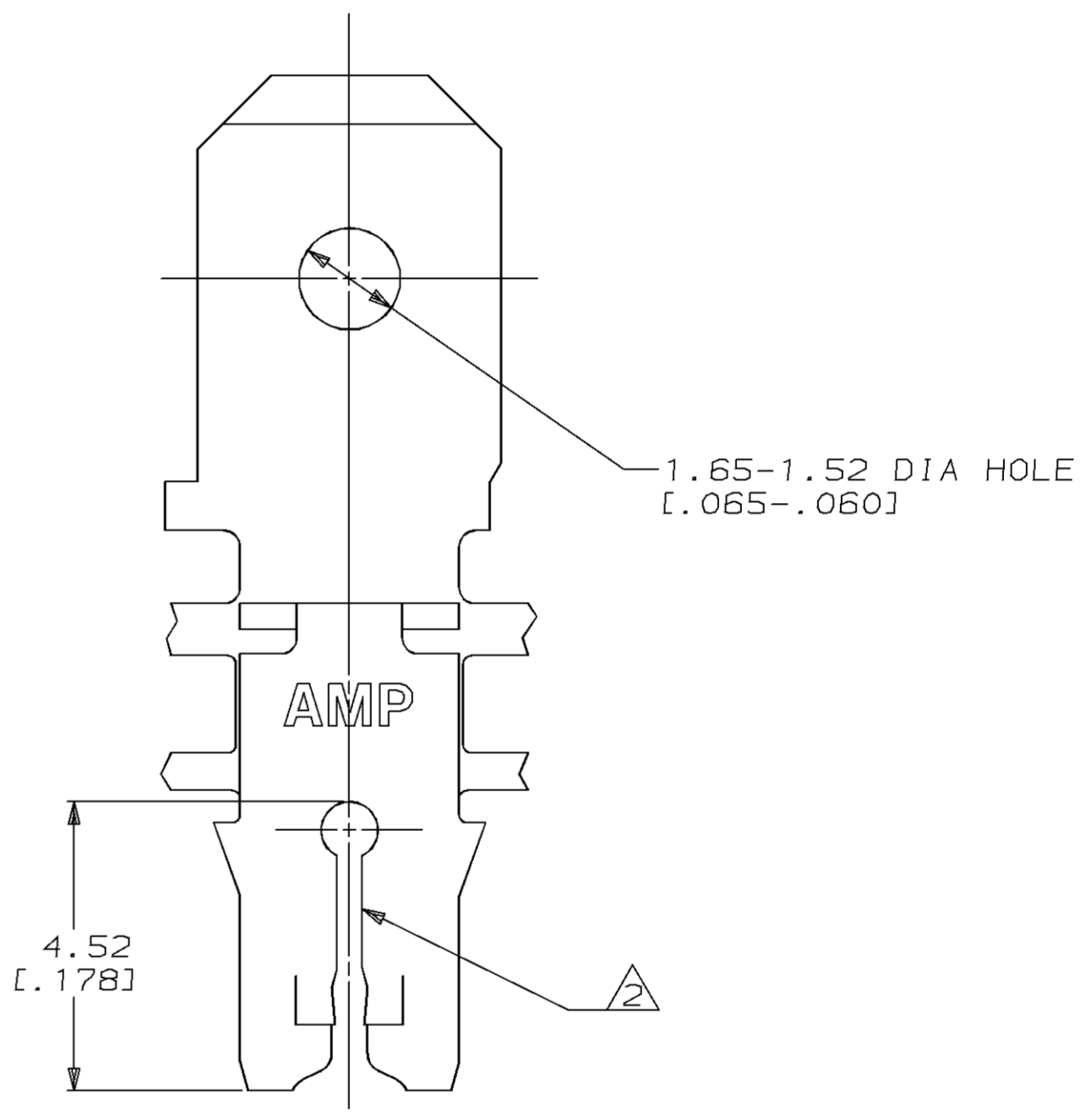
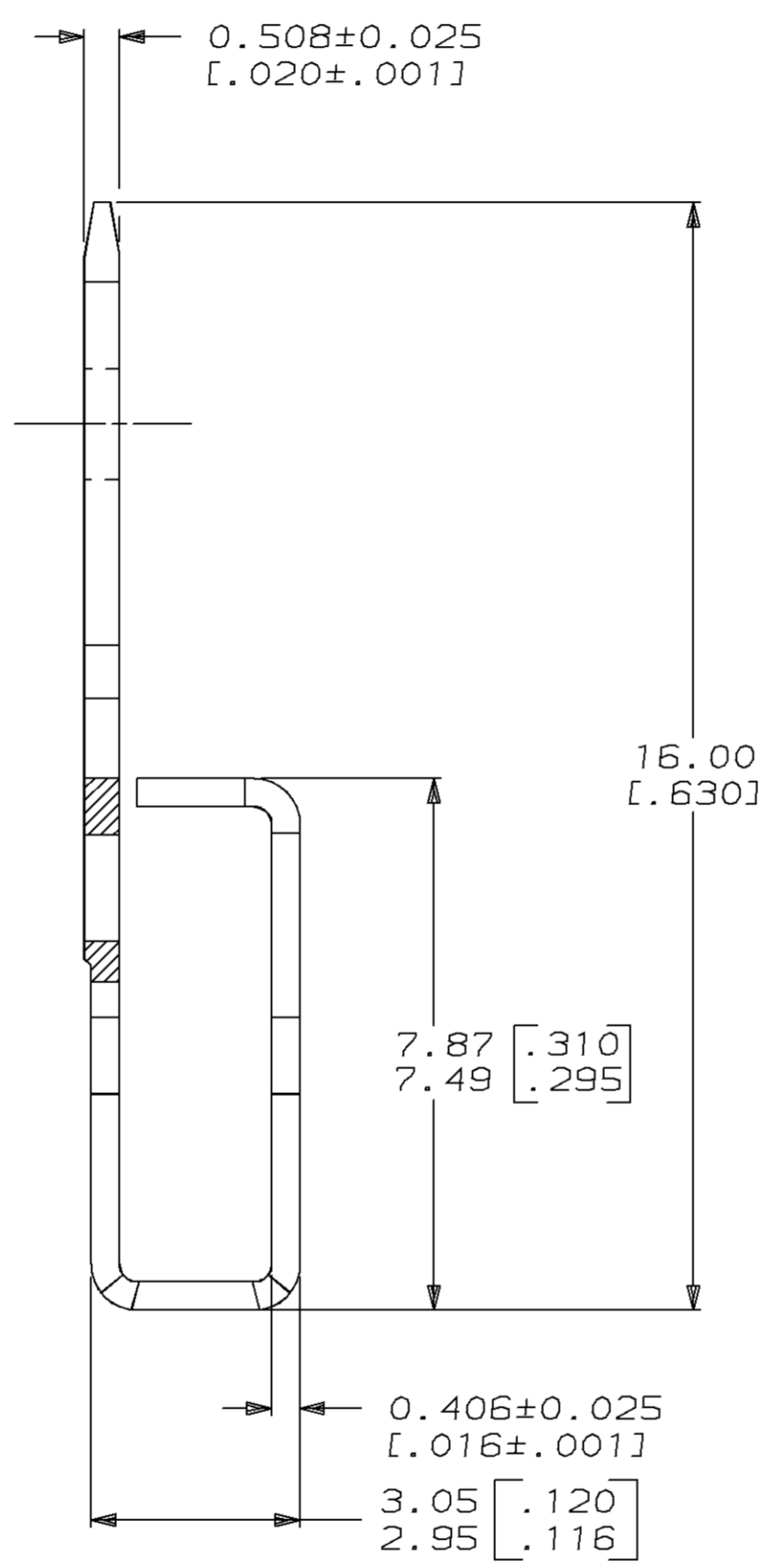
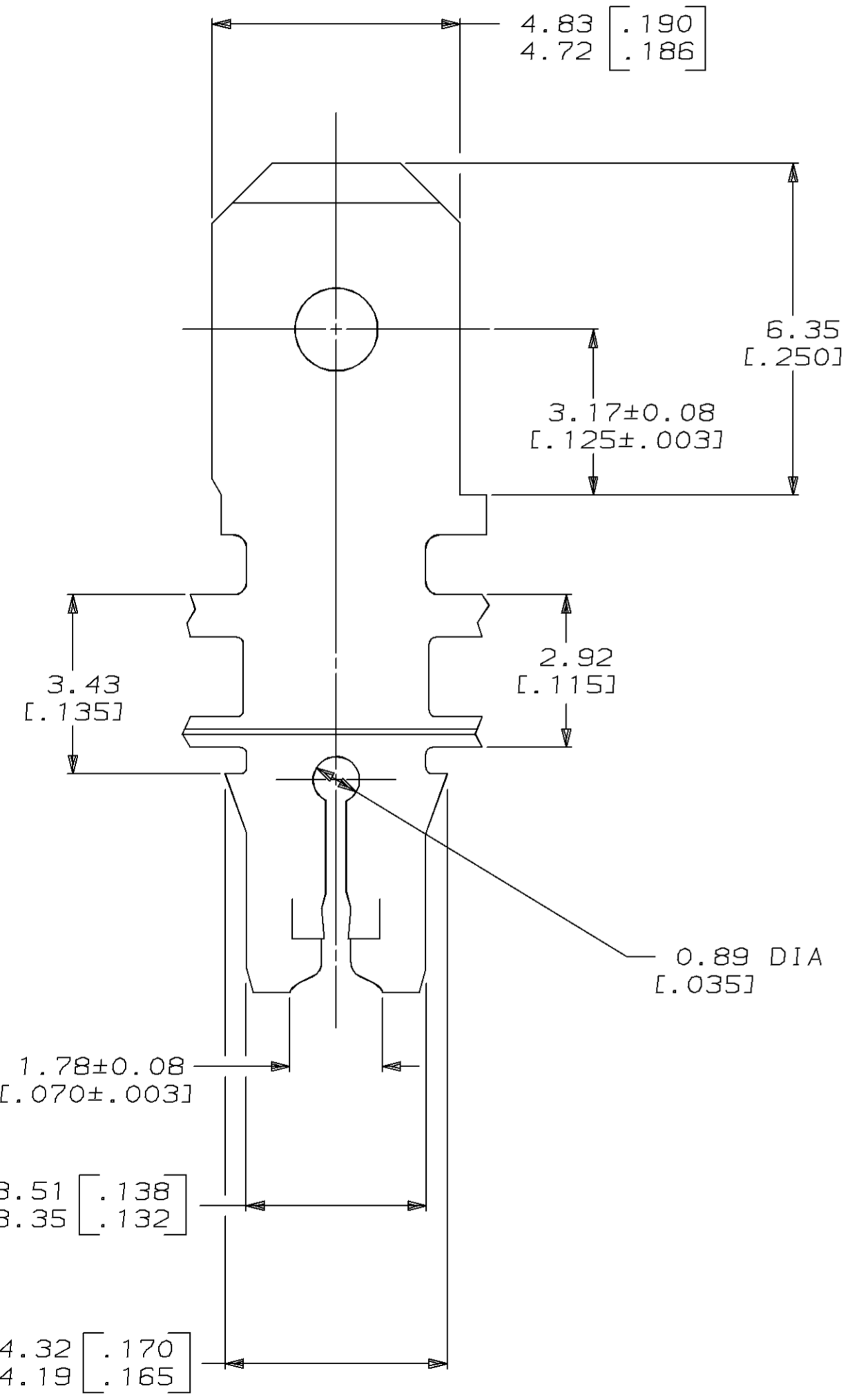


LOC	DIST	P	F	ZONE	LTR	DESCRIPTION	DATE	APPD
AF	50					REV LENGTH PER 0710-0034-95	03/FEB/95	MF/NN



- 1 CONTINUOUS STRIP ON REELS WITH TERMINALS LOCATED ON 5.59±0.08 [.220±.003] CENTERS.
- 2 SLOT TERMINATES A SINGLE MAGNET WIRE ONLY. ALUMINUM RANGE: 0.72-0.96mm [#21-#18.5] AWG.
- 3 AFTER INSERTION INTO PLASTIC HOLDER TAB PORTION MUST BE BENT OVER 45° TO 90° OR POTTED-IN TO PREVENT PULL-OUT WHEN MATING RECEPTACLE IS DISCONNECTED.
- 4 ANVIL HEIGHT TO BE 2.29±0.13 [.090±.005].
- 5 VARNISH RESIST OVER 0.002032 [.000080] MIN TIN PER MIL-T-10727.



63669-1  
PART NO

DO NOT SCALE PRINT. UNLESS SPECIFIED DIMENSIONS IN mm [INCHES] TOLERANCES ON: 2 PLC DEC ± 0.25 [.010] 3 PLC DEC ± - ANGLES ± -	DR 9/3/92 MICHAEL S. FEHER CHK 9/4/92 JEFF R. RUTH APPD 9/15/92 NELSON E. NEFF APPD 9/15/92 TERRY L. SHUTTER	NAME <b>AMP</b> AMP Incorporated Harrisburg, PA 17105-3608
MATERIAL H03 PRE-MILLED BRASS	PRODUCT SPEC 108-2012	TERMINAL, TAB, 4.75 [.187] FASTON, <sup>TM</sup> MAG-MATE <sup>TM</sup>
FINISH 5	APPLICATION SPEC 114-2046 4	SIZE CAGE CODE DRAWING NO C 00779 C=63669
	WEIGHT -	SCALE 10:1 SHEET 1 OF 1

THIS DRAWING IS A CONTROLLED DOCUMENT FOR AMP INCORPORATED. IT IS SUBJECT TO CHANGE AND THE CONTROLLING ENGINEERING ORGANIZATION SHOULD BE CONTACTED FOR THE LATEST REVISION.