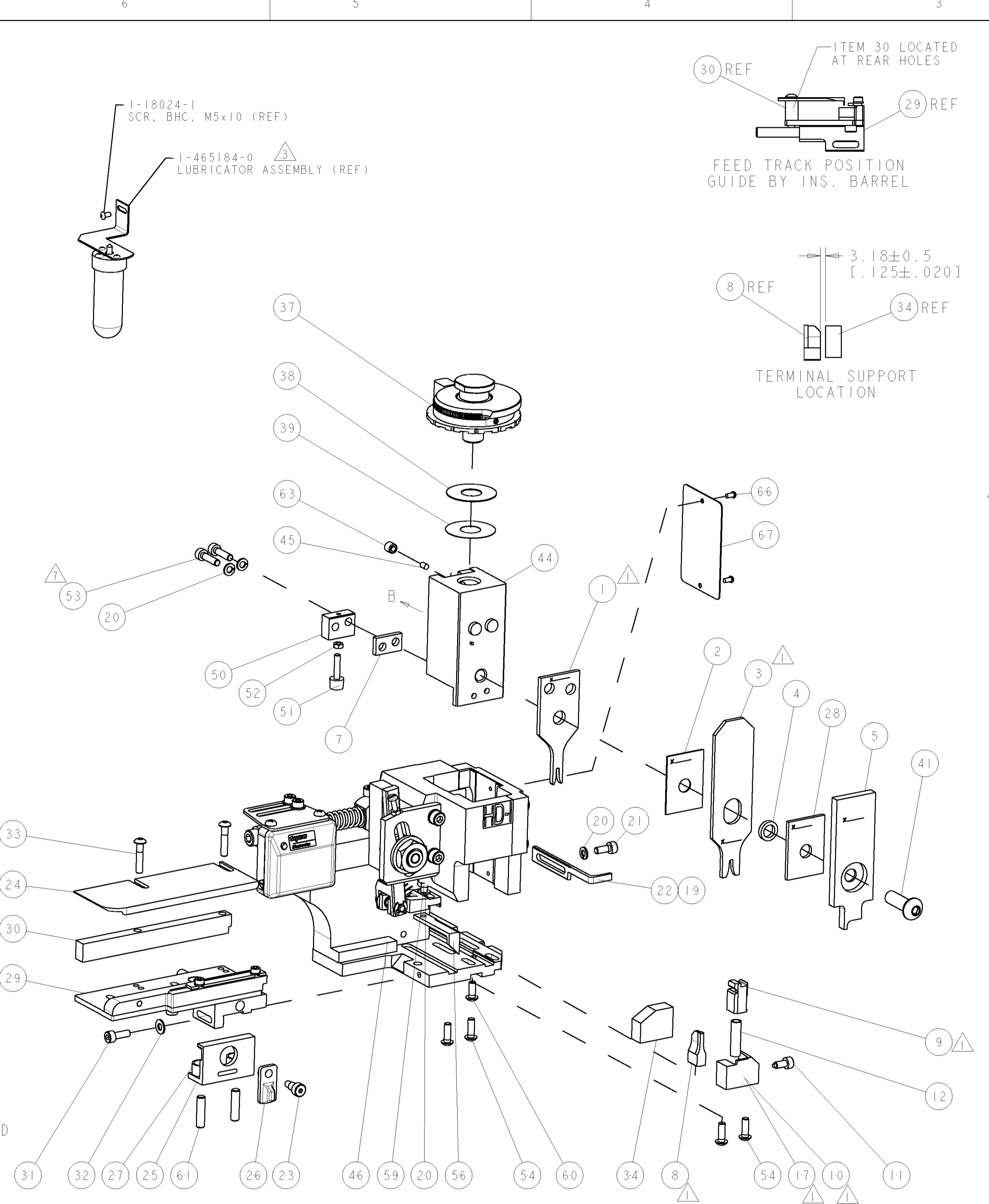
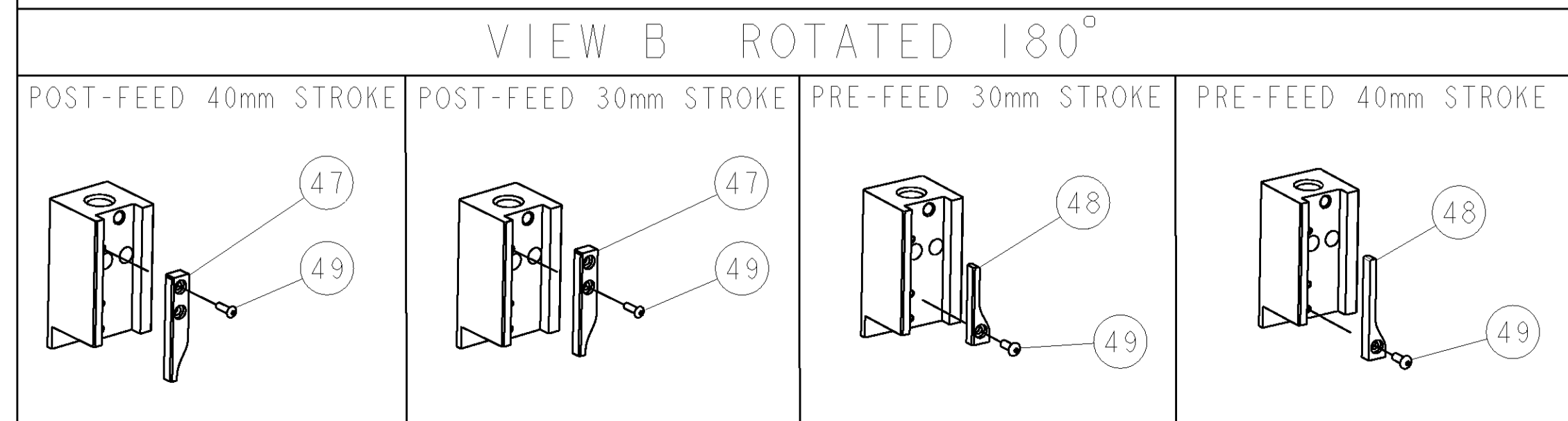


PART NUMBER	REV	TERMINATOR	FEED TYPE	DESCRIPTION
1528796-1	A	LEADMAKER	MECH POST FEED	CUTS CARRIER
1528796-2	A	BENCH	MECH PRE FEED	CUTS CARRIER
1528796-6	A	LEADMAKER	MECH POST FEED	CONTINUOUS CARRIER
7-1528796-1	A	LEADMAKER	MECH POST FEED	-1 AND SPARE PARTS
7-1528796-2	A	BENCH	MECH PRE FEED	-2 AND SPARE PARTS
7-1528796-6	A	LEADMAKER	MECH POST FEED	-6 AND SPARE PARTS
7-1528796-7	A	-	-	SPARE PARTS KIT

CRIMP DATA SUMITOMO TERMINAL CUST/TYCO CRIMP SPECS			
TERMINAL NAME: HE SERIES .090 MALE CONNECTOR			
CRIMP	SIZE	TYPE	RANGE
WIRE	1.78 [.070 IN]	F	0.30-0.50mm ²
INSUL	2.54 [1.00 IN]	OV	1.20-1.60 [.047-.063 IN]
WIRE STRIP LENGTH 4.00 [1.57 IN]		APPL INSTRUCTIONS 408-8322 & 408-8490	
TERMINAL APPL SPEC	-	FEED	10.00 [3.94 IN]
TERMINALS APPLIED			
TYCO TERM PN	MANUF TERM PN	-	-
1949385-1	8100-1571	-	-
-	-	-	-
-	-	-	-
-	-	-	-
WIRE SIZE	CRIMP HEIGHT	REF SETTING	
0.50mm ²	1.15 ± 0.05 [.045 ± .002 IN]	D0	
0.35mm ²	1.08 ± 0.05 [.043 ± .002 IN]	D6	
0.30mm ²	1.05 ± 0.05 [.041 ± .002 IN]	D9	

- △ RECOMMENDED SPARE PARTS.
- 2. GREASE RAM, CAM, CAM FOLLOWER AND FEED ROD LIGHTLY.
- △ CERTAIN TERMINALS REQUIRE LUBRICATION. REFER TO THE APPLICATOR INSTRUCTION SHEET FOR MORE INFORMATION.
- 4. LUBRICATE DAILY PER THE APPLICATOR INSTRUCTION SHEET SUPPLIED WITH THE APPLICATOR.
- △ CRIMP DATA SUPPLIED BY ORIGINAL CUSTOMER, BUT ALSO COMPLIES WITH TYCO CALCULATIONS.
- △ 0.35mm² CRIMP DATA CALCULATED BY TYCO ELECTRONICS UK LTD
- △ ITEM 53, CUT TO LENGTH AT ASSEMBLY.
- △ THIS APPLICATOR IS DESIGNED TO APPLY FLY TYPE INSULATION. INSULATION RANGE SHOWN IS THAT OF THE APPLICATOR.



* WARNING
ON INSTALLATION, SET WIRE DISC TO LARGEST WIRE SIZE SETTING. USE OF SETTINGS BELOW MIN. REQUIRED CRIMP HEIGHT SETTING WILL CAUSE DAMAGE TO CRIMP TOOLING.

-77	-76	-72	-71	-6	-2	-1	PART NO	DESCRIPTION	ITEM NO
-	-	-	-	-	-	-	-	-	84
-	-	-	-	-	-	-	-	-	83
-	-	-	-	-	-	-	-	-	82
-	-	-	-	-	-	-	-	-	81
-	-	-	-	-	-	-	-	-	80
-	-	-	-	-	-	-	-	-	79
-	-	-	-	-	-	-	-	-	78
-	-	-	-	-	-	-	-	-	77
-	-	-	-	-	-	-	-	-	76
-	-	-	-	-	-	-	-	-	75
-	-	-	-	-	-	-	-	-	74

SET UP GAGE 458637-3		LOC	DIST	REVISONS				DATE	BY	APPD
A	66			REV	DATE	DESCRIPTION	DATE	BY	APPD	
				A	13JUN2007	SEE ECO-07-014008		DP	MC	
-	-	-	-	-	-	-	-	-	73	
-	-	-	-	-	-	-	-	-	72	
-	1	1	1	1	1	1338705-3	DOCUMENTATION PACKAGE		71	
-	-	-	-	-	-	-	-	-	70	
-	-	-	-	-	-	-	-	-	69	
-	-	-	-	-	-	-	-	-	68	
-	1	1	1	1	1	461264-5	PLATE, IDENTIFICATION		67	
-	2	2	2	2	2	21017-2	SCREW, DRIVE		66	
-	-	-	-	-	-	-	-	-	65	
-	-	-	-	-	-	-	-	-	64	
-	1	1	1	1	1	3-18031-0	SCR, SET, CUP POINT M6 X 6.0		63	
-	-	-	-	-	-	-	-	-	62	
-	2	2	2	2	2	2-18032-5	SCR, SET, FLT POINT M5 X 20.0		61	
-	1	1	1	1	1	18024-7	SCR, BTN SKT HD CAP (M4 X 10.0)		60	
-	1	1	1	1	1	5-18022-2	SCR, HEX HD CAP M4 X 8.0		59	
-	-	-	-	-	-	-	-	-	58	
-	-	-	-	-	-	-	-	-	57	
-	1	1	1	1	1	1338685-1	PAWL, FEED		56	
-	-	-	-	-	-	-	-	-	55	
-	4	4	4	4	4	18024-8	SCR, BTN SKT HD CAP (M4 X 12.0)		54	
-	2	2	2	2	2	1-18023-3	SCR, SKT HD CAP M4 X 16.0		53	
-	1	1	1	1	1	18030-1	NUT, HEX, REG M3		52	
-	1	1	1	1	1	811242-5	BUMPER, HOLD DOWN		51	
-	1	1	1	1	1	690753-2	SPACER, TONKER		50	
-	1	1	1	1	1	18024-3	SCR, BTN SKT HD CAP (M3 X 10.0)		49	
-	1	1	1	1	1	1338675-1	CAM, UNIVERSAL PRE FEED		48	
-	1	1	1	1	1	1338676-1	CAM, UNIVERSAL POST-FEED		47	
-	1	1	1	1	1	1320999-3	APPLICATOR SUBASSEMBLY, HDI		46	
-	1	1	1	1	1	690191-1	PLUG, NYLON		45	
-	1	1	1	1	1	1338660-1	RAM		44	
-	-	-	-	-	-	-	-	-	43	
-	-	-	-	-	-	-	-	-	42	
-	1	1	1	1	1	2-18024-6	SCR, BTN SKT HD CAP (M8 X 25.0)		41	
-	-	-	-	-	-	-	-	-	40	
-	1	1	1	1	1	690125-1	SHIM SUB-ASSY		39	
-	1	1	1	1	1	469367-9	SHIM		38	
-	1	1	1	1	1	879103-2	FINE ADJUST HEAD ASSEMBLY		37	
-	-	-	-	-	-	-	-	-	36	
-	-	-	-	-	-	-	-	-	35	
-	1	1	1	1	1	1320934-1	SUPPORT, TERMINAL		34	
-	2	2	2	2	2	1-18024-0	SCR, BTN SKT HD CAP (M4 X 20.0)		33	
-	1	1	1	1	1	18027-2	WASHER, FLAT, REG M4		32	
-	1	1	1	1	1	1-18023-2	SCR, SKT HD CAP M4 X 12.0		31	
-	1	1	1	1	1	1320908-4	SPACER, STRIP GUIDE		30	
-	1	1	1	1	1	1633073-1	STRIP GUIDE ASSEMBLY		29	
-	1	1	1	1	1	2-455888-0	SPACER, CRIMPER		28	
-	2	2	2	2	2	1-22284-0	SPRING, COMPRESSION		27	
-	1	1	1	1	1	356835-1	LEVER, DRAG RELEASE		26	
-	1	1	1	1	1	240792-1	DRAG, TERMINAL		25	
-	1	1	1	1	1	1320928-3	PLATE, STRIP GUIDE		24	
-	1	1	1	1	1	980371-4	SCR, SKT HD SHLDR 5.0 DIA X 6.0		23	
-	1	1	1	1	1	690472-2	STRIPPER		22	
-	1	1	1	1	1	1-18023-1	SCR, SKT HD CAP M4 X 10.0		21	
-	4	4	4	4	4	18025-2	WASHER, SPRG LOCK, REG M4		20	
-	1	1	1	1	1	690472-1	STRIPPER		19	
-	-	-	-	-	-	-	-	-	18	
-	1	1	1	1	1	1338684-1	SHEAR HOLDER, FRONT		17	
-	-	-	-	-	-	-	-	-	16	
-	-	-	-	-	-	-	-	-	15	
-	-	-	-	-	-	-	-	-	14	
-	-	-	-	-	-	-	-	-	13	
-	1	1	1	1	1	3-22280-3	SPRING, COMPRESSION		12	
-	1	1	1	1	1	356885-4	STOP, SHEAR		11	
-	1	1	1	1	1	1320921-1	SHEAR HOLDER, FRONT, CUT		10	
-	1	1	1	1	1	454276-1	FLOATING SHEAR, FRONT		9	
1	2	2	2	1	1	4-1633139-1	ANVIL, COMBINATION		8	
-	1	1	1	1	1	240641-5	SPACER		7	
-	-	-	-	-	-	-	-	-	6	
-	1	1	1	1	1	1-455889-4	DEPRESSOR, SHEAR		5	
-	1	1	1	1	1	238011-4	BLOCK, CRIMPER SPACER		4	
1	2	2	2	1	1	1-854830-8	CRIMPER, INSULATION SPECIAL		3	
-	1	1	1	1	1	455888-6	SPACER, CRIMPER		2	
1	2	2	2	1	1	3-456404-5	CRIMPER, WIRE PREMIUM		1	

TYCO ELECTRONICS UK LTD. THE COMPANY IS NOT RESPONSIBLE FOR THE DESIGN OR THE OPERATION OF THE APPLICATOR UNLESS THE USER HAS BEEN ADVISED BY THE COMPANY AND THE USER HAS BEEN ADVISED BY THE COMPANY AND THE USER HAS BEEN ADVISED BY THE COMPANY.

LOC: L LOFHOUSE DATE: 16MAY2007
 CDR: M CLIFFORD NAME: M CLIFFORD
 APVD: 16MAY2007
 PRODUCT SPEC: FINE ADJUST SIDE FEED HDI APPLICATOR
 APPLICATION SPEC: See Table
 MATERIAL: FINISH: WEIGHT: A1 00779 C=1528796
 CUSTOMER DRAWING: SCALE: 3:5 SHEET 1 OF 1 REV A