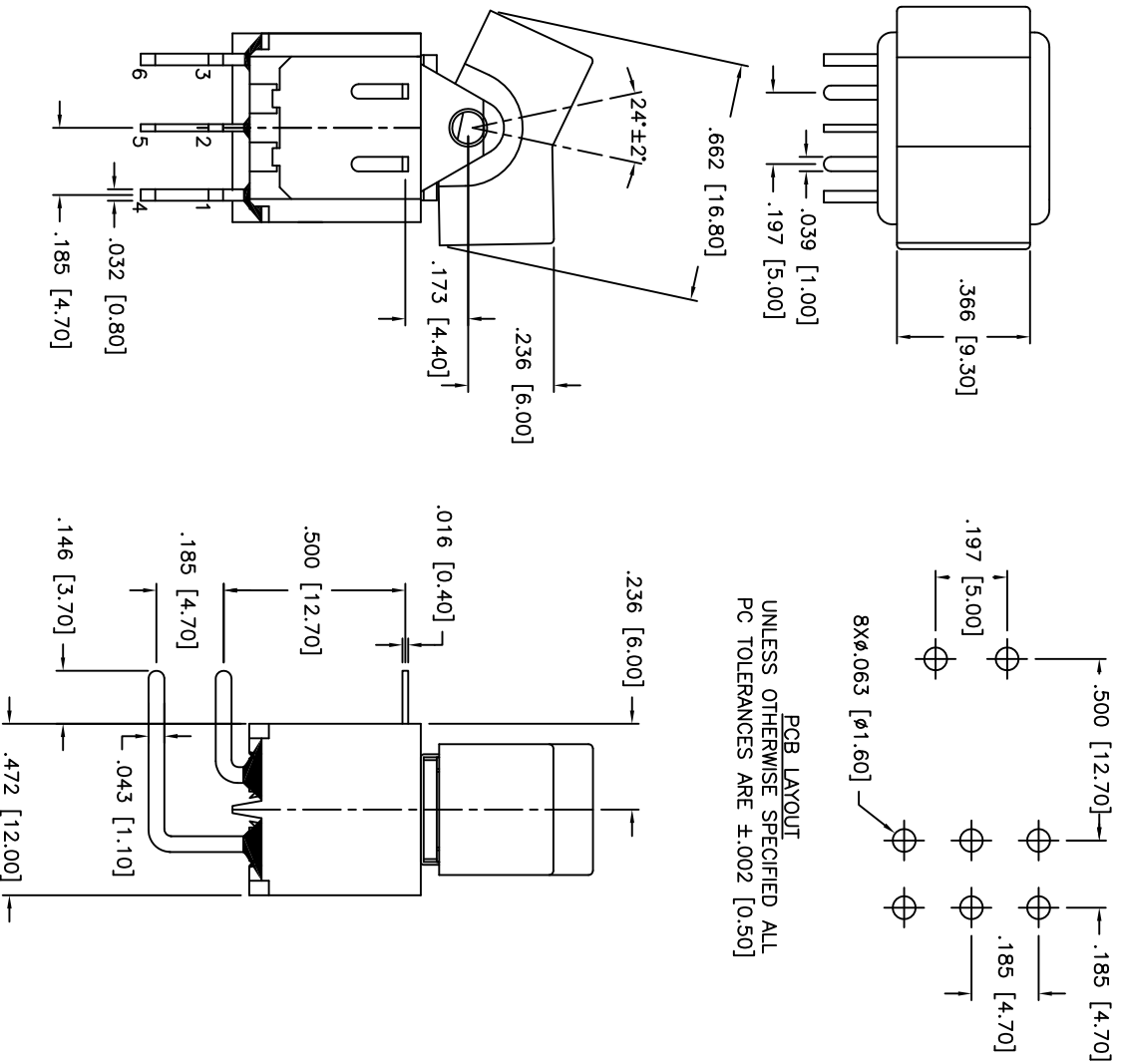


THIS DOCUMENT IS THE PROPERTY OF APEM COMPONENTS AND SHALL NOT BE COPIED, REPRODUCED, DISCLOSED OR USED AS THE BASIS FOR MANUFACTURING OR SALE WITHOUT PERMISSION OF A DULY AUTHORIZED REPRESENTATIVE OF APEM COMPONENTS INC.



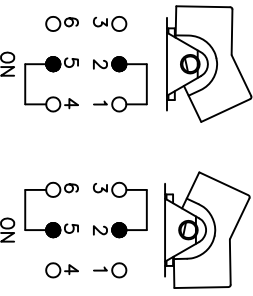
PCB LAYOUT
UNLESS OTHERWISE SPECIFIED ALL
PC TOLERANCES ARE ±.002 [0.50]

DATE	SYM	REVISION RECORD	DWN.	CK.

DESCRIPTION: DPDT ON-ON RIGHT ANGLE ROCKER SWITCH
SPECIFICATIONS:
CURRENT/VOLTAGE RATINGS WITH RESISTIVE LOADS:
3A 250VAC,
6A 125VAC,
4A 30VDC
INITIAL CONTACT RESISTANCE: 10mΩ MAX.
INSULATION RESISTANCE: 1,000MΩ MIN. AT 500VDC
DIELECTRIC STRENGTH:
1,000vrms 50Hz MIN. BETWEEN TERMINALS,
1,500vrms 50Hz BETWEEN TERMINALS AND FRAME
1,500vrms 50Hz BETWEEN POLES
CONTACT BOUNCE: 2ms MAX.
ELECTRICAL LIFE AT FULL LOAD: 50,000 CYCLES
OPERATING TEMPERATURE: -40°C TO +85°C

MATERIALS:
CASE: DAP OR HIGH TEMP. PLASTIC MATERIAL
ACTUATOR: POLYAMIDE
BUSHING: NICKEL PLATED BRASS
HOUSING: STAINLESS STEEL OR TIN PLATED STEEL
CONTACTS: SILVER
TERMINAL SEAL: EPOXY

RoHS COMPLIANT



● = COMMON

Q.A. INSPECT:	DESIGNER'S INITIAL:	DATE:	DO NOT SCALE DRAWING
TOLERANCES (UNLESS OTHERWISE SPECIFIED): XXX=±.008 [0.20] XXXX=±.0008 [0.02] ANGLE = 30.5°	APPEM APEM COMPONENTS 63 NARR. RD. 01835 Haverhill, MA 01830 Phone: 978-372-5554	12/18/08	57946WXX433VDEUCSA
TITLE VDE APPROVED ROCKER SWITCH	DRW. CJD BR. PJD	SHEET 1 OF 1	SIZE B
SCALE 3:1	THIRD ANGLE PROJECTION	REV A	